



Tab B, No. 13

**UNITED STATES DEPARTMENT OF COMMERCE**  
**National Oceanic and Atmospheric Administration**  
NATIONAL MARINE FISHERIES SERVICE

Southeast Regional Office  
263 13<sup>th</sup> Avenue South  
St. Petersburg, Florida 33701-5505  
(727) 824-5305; FAX (727) 824-5308  
<http://sero.nmfs.noaa.gov>

MAY 19 2009

F/SER24:SB

Dr. Thomas McIlwain, Chair  
Gulf of Mexico Fishery Management Council  
2203 North Lois Avenue  
Suite 1100  
Tampa, Florida 33607


Dear Dr. McIlwain:

Emergency regulations prohibiting bottom longlining for reef fish shoreward of a line representing the 50-fathom contour, east of Cape San Blas, Florida, became effective at 12:01 a.m., Monday May 18, 2009.

NOAA Fisheries Service's Reef Fish Bottom Longline Observer Program documented the take of five sea turtles during an April 2009 reef fish bottom longline trip fishing inshore of the 50-fathom depth contour. Of these, two turtles were released alive, three were dead. All totaled, 28 reef fish bottom longline trips have been observed during 2009. The aforementioned trip is the only record of turtle takes to date. Enclosed is a map showing these takes, as well as all other observed takes during 2006-2008 for comparative purposes. Observer effort data associated with the 2009 takes are not included in the map.

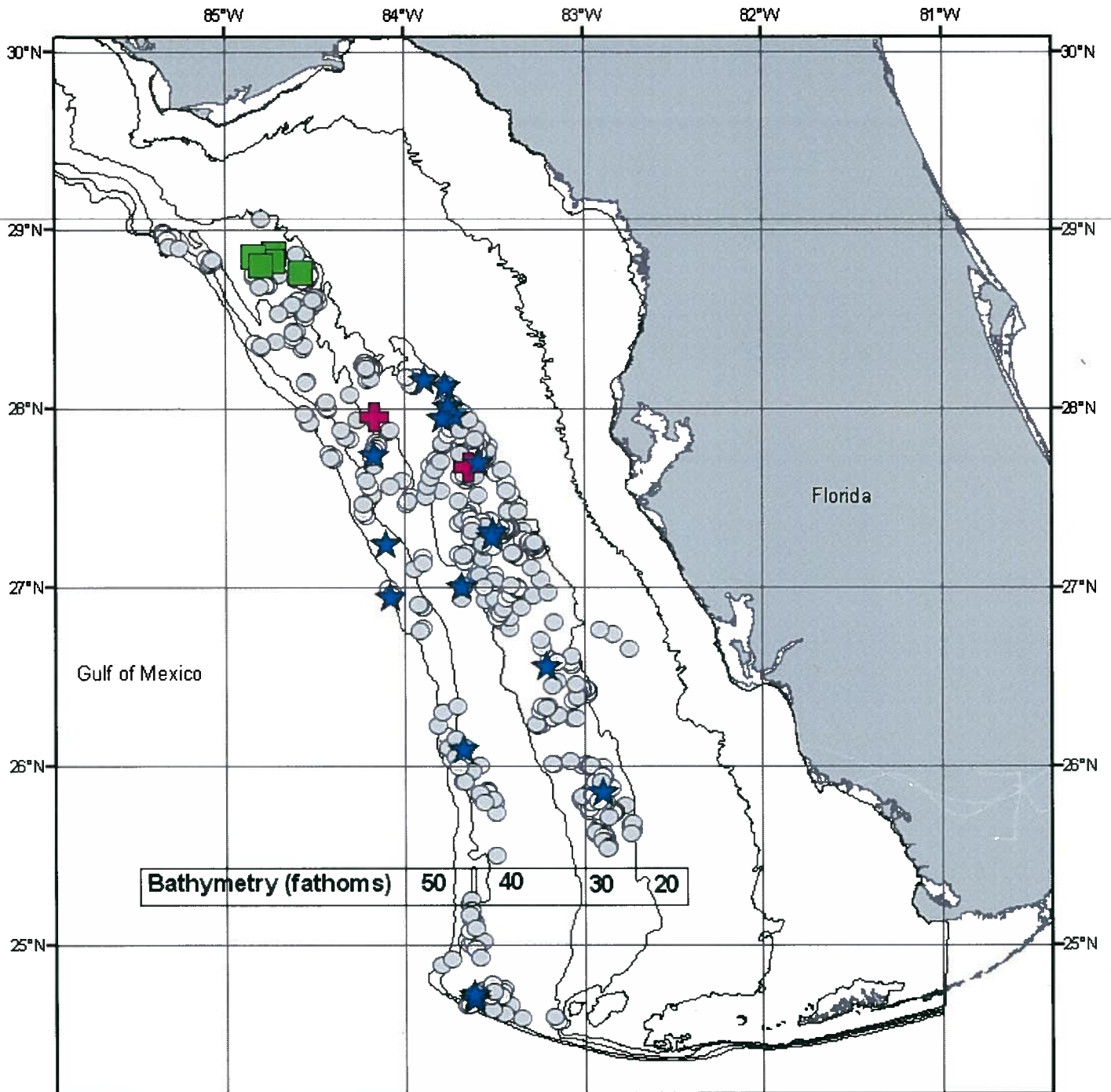
We will provide you with additional information regarding these takes and the overall observer effort during the first five months of 2009 after the Southeast Fisheries Science Center has the opportunity to more thoroughly review the records.

Sincerely,




  
(fn) Roy E. Crabtree, Ph.D.  
Regional Administrator

Enclosure





**Reef Fish Observer Program**

Sea Turtle Takes		 Observed Sets (in depths <55 fathoms)	 Bathymetry Contours	 0 20 40 80 Kilometers
2006-2008	April 2009			
★ 1	■ 1			
✚ 2				