

**Tab L, No. 3(c)**

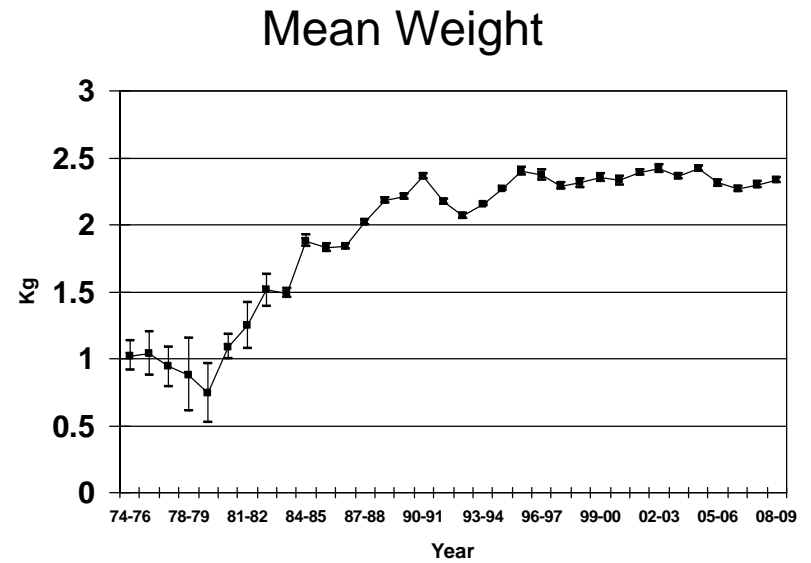
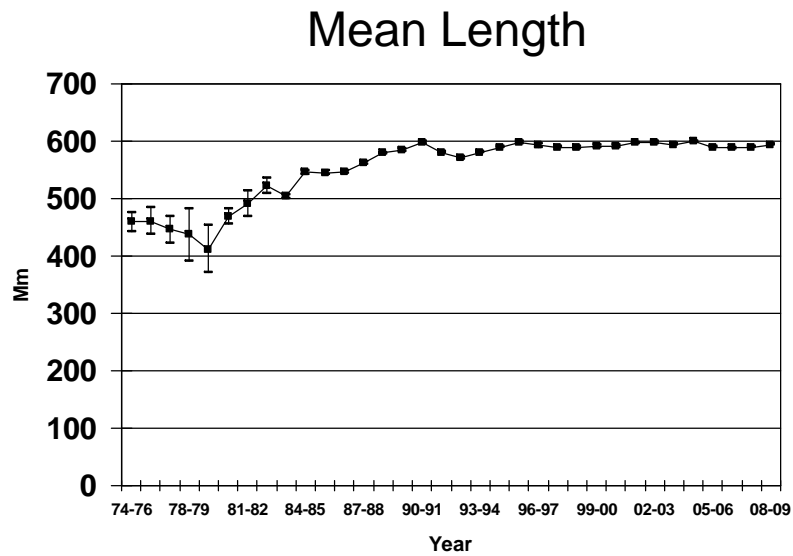
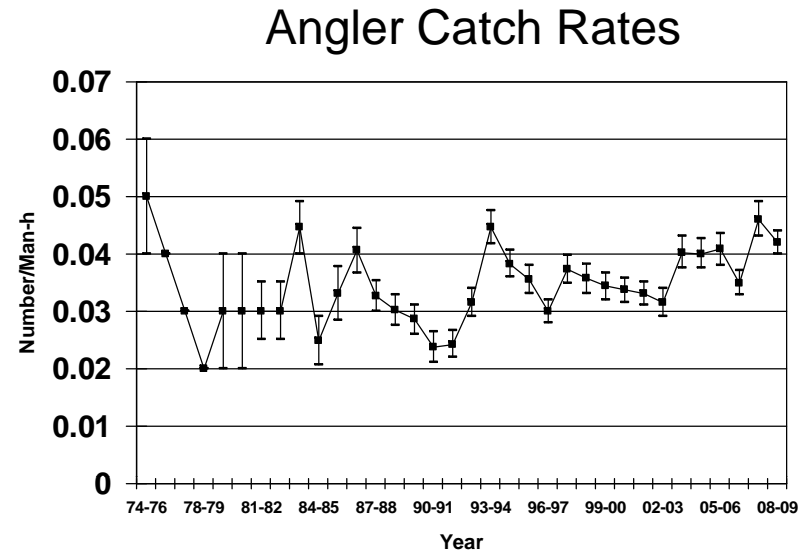
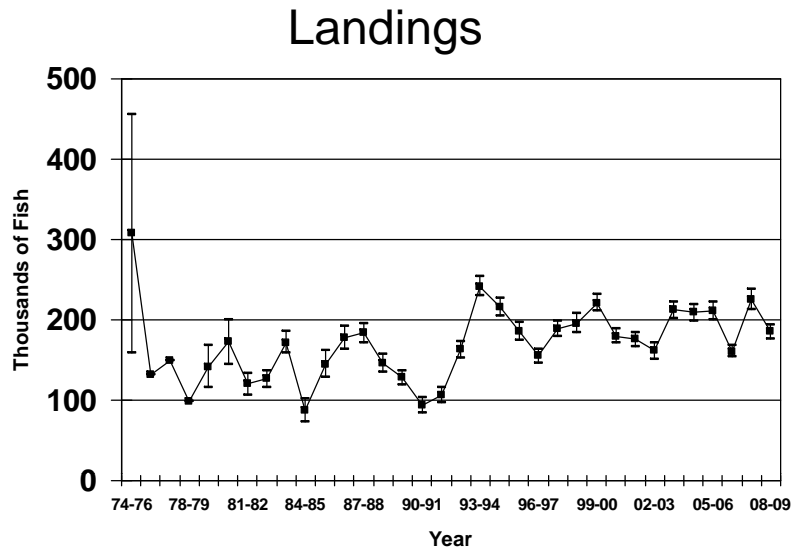
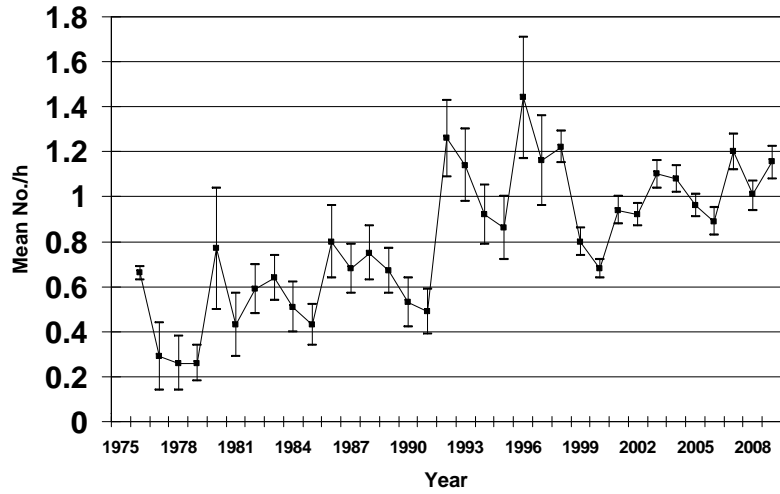
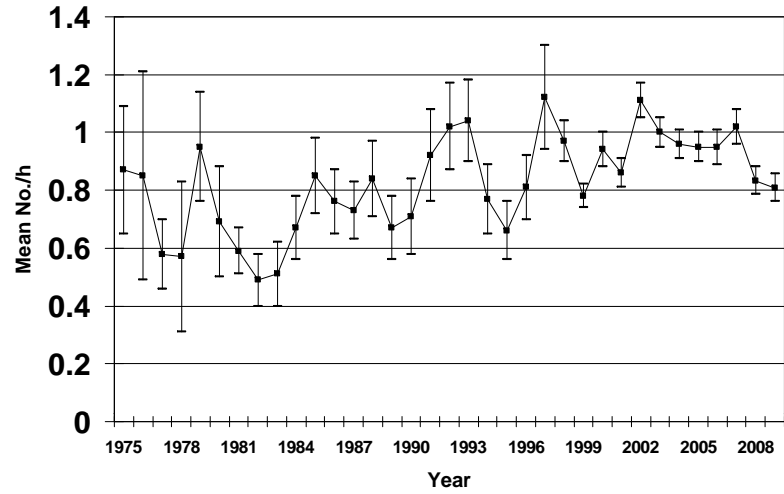


Figure 1. Annual coastwide statistics ( $\pm 1$  SE) for red drum landed from Texas bays and passes by private-boat fishermen, May 1974-May 2009.

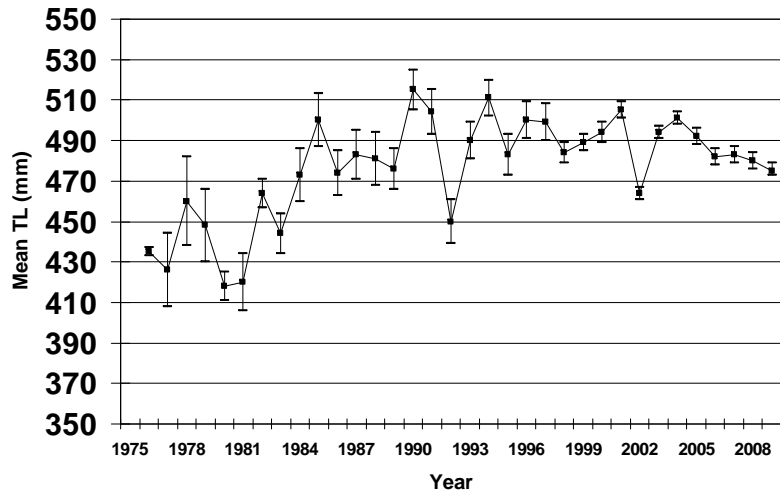
### Spring Gill Net CPUE



### Fall Gill Net CPUE



### Spring Gill Net Mean Lengths



### Fall Gill Net Mean Lengths

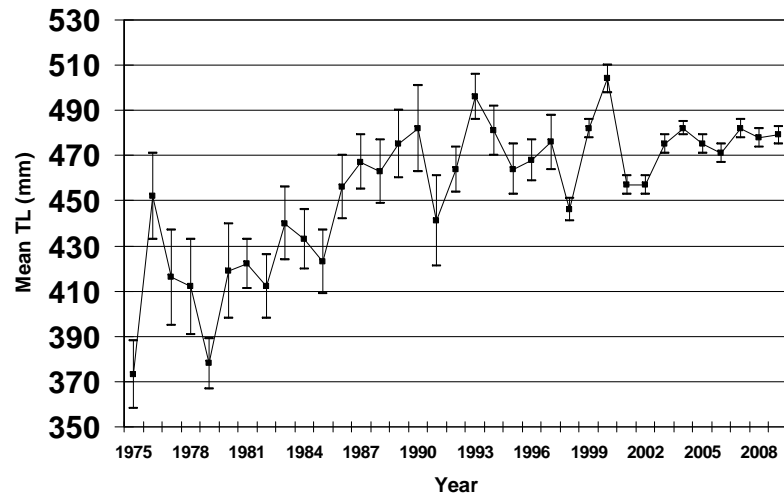


Figure 2. Coastwide gill net catch/hour ( $\pm 1$  SE) for red drum from Texas bays during 1976-2009, by season.